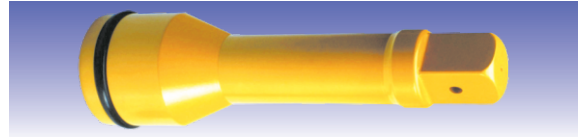






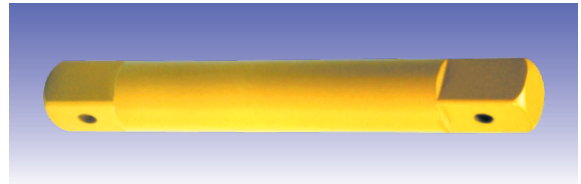
### REGULAR EXTENSIONS

OAL mm (inch)	MODEL NO.	SHANK DIA mm (inch)	HEAD DIA mm (inch)	Wt Kg. (lbs.)
150 (6") 304 (12")	E2406 E2412	52.0 (2.047)	86.0 (3.386)	3.90 (8.58) 6.30 (13.86)



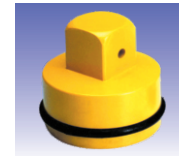
### DOUBLE MALE EXTENSIONS

OAL mm (inch)	MODEL NO.	SHANK DIA mm (inch)	HEAD DIA mm (inch)	Wt Kg. (lbs.)
100 (4") 125 (5") 250 (10") 510 (20")	S2404 S2405 S2410 S2420	52.0 (2.047)	38.1 (1.500)	2.50 (5.50) 2.80 (6.16) 3.60 (7.92) 5.10 (11.20)



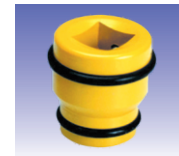
### SQUARE ADAPTORS

SIZE	MODEL NO.	HEAD DIA mm (inch)	OAL mm (inch)	Wt Kg. (lbs.)
1.1/2" F X 1" M	A2416	86.0 (3.386)	100.0 (3.937)	1.98 (4.37)
1.1/2" F X 2.1/2" M	A2440		113.0 (4.448)	3.92 (8.65)
1.1/2" F X #5 M	A2495		115.0 (4.527)	4.20 (9.25)



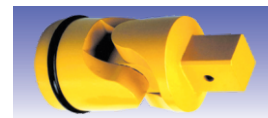
### DOUBLE FEMALE ADAPTORS

SIZE	MODEL NO.	HEAD DIA mm (inch)	OAL mm (inch)	Wt Kg. (lbs.)
1.1/2" F X 1" F	AN2416	86.0 (3.386)	80.0 (3.149)	2.30 (5.06)
1.1/2" F X 1.1/2" F	AN2424		95.0 (3.740)	3.60 (7.92)
1.1/2" F X 2.1/2" F	AN2440		110.0 (4.330)	4.50 (9.90)



### UNIVERSAL JOINT

SQUARE DRIVE	MODEL NO.	DIA mm (inch)	OAL mm (inch)	Wt Kg. (lbs.)
1.1/2"	U2424	86.0 (3.386)	158 (6.220)	3.85 (8.47)



BRAND TS Impact Sockets ideal for use with Hydraulic Torque Wrenches.

