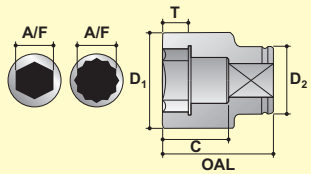
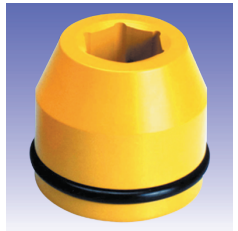


IMPACT SOCKETS



A/F Nominal size across flats
D1 Max. outside dia. socket end
D2 Max. outside dia. sq. drive end
OAL Nominal overall length
T Min. depth of socket form
C Bolt clearance depth



METRIC HEXAGON

A/F mm	MODEL NO.	D1 mm	D2 mm	T mm	C mm	OAL mm	Wt. Kg.
17	S-12M17	30.0	42.0	12.0	21.0	45.0	0.303
19	S-12M19	32.0	42.0	12.0	21.0	45.0	0.306
21	S-12M21	36.0	42.0	13.0	24.0	48.0	0.336
22	S-12M22	37.0	42.0	13.0	24.0	48.0	0.338
23	S-12M23	39.0	42.0	13.0	24.0	48.0	0.348
24	S-12M24	39.0	42.0	15.0	24.0	48.0	0.342
26	S-12M26	41.0	44.0	15.0	24.0	48.0	0.376
27	S-12M27	44.0	44.0	16.0	24.0	48.0	0.396
28	S-12M28	44.0	44.0	16.0	24.0	48.0	0.388
30	S-12M30	47.0	44.0	18.0	27.0	51.0	0.443
32	S-12M32	49.0	44.0	18.0	27.0	51.0	0.453
33	S-12M33	50.0	44.0	18.0	27.0	51.0	0.459
34	S-12M34	52.0	44.0	20.0	30.0	54.0	0.509
36	S-12M36	54.0	54.0	20.0	30.0	54.0	0.647
38	S-12M38	57.0	54.0	23.0	35.0	59.0	0.754
41	S-12M41	61.0	54.0	23.0	35.0	59.0	0.811
42	S-12M42	62.0	54.0	25.0	35.0	59.0	0.814
43	S-12M43	63.0	54.0	25.0	38.0	62.0	0.862
46	S-12M46	67.0	54.0	25.0	38.0	62.0	0.941
50	S-12M50	70.0	54.0	28.0	41.0	65.0	0.968

FRACTIONAL HEXAGON

A/F inch	MODEL NO.	D1 inch	D2 inch	T inch	C inch	OAL inch	Wt. lbs.
9/16	S-1209	1.131	1.654	0.472	0.827	1.772	0.620
5/8	S-1210	1.181	1.654	0.472	0.827	1.772	0.670
11/16	S-1211	1.211	1.654	0.472	0.827	1.772	0.690
3/4	S-1212	1.260	1.654	0.472	0.827	1.772	0.670
13/16	S-1213	1.417	1.654	0.512	0.945	1.890	0.740
7/8	S-1214	1.535	1.654	0.512	0.945	1.890	0.770
15/16	S-1215	1.535	1.654	0.591	0.945	1.890	0.750
1	S-1216	1.614	1.732	0.591	0.945	1.890	0.830
1.1/16	S-1217	1.732	1.732	0.630	0.945	1.890	0.870
1.1/8	S-1218	1.850	1.732	0.709	1.063	2.008	0.970
1.3/16	S-1219	1.880	1.732	0.709	1.063	2.008	0.970
1.1/4	S-1220	1.929	1.732	0.709	1.063	2.008	1.000
1.5/16	S-1221	2.047	1.732	0.787	1.181	2.126	1.120
1.3/8	S-1222	2.076	2.126	0.787	1.181	2.126	1.400
1.7/16	S-1223	2.106	2.126	0.787	1.181	2.126	1.400
1.1/2	S-1224	2.344	2.126	0.906	1.378	2.323	1.660
1.9/16	S-1225	2.352	2.126	0.906	1.378	2.323	1.760
1.5/8	S-1226	2.441	2.126	0.984	1.378	2.323	1.790
1.11/16	S-1227	2.480	2.126	0.984	1.496	2.441	1.900
1.3/4	S-1228	2.688	2.126	0.984	1.496	2.441	2.070
1.13/16	S-1229	2.688	2.126	0.984	1.496	2.441	2.070
1.7/8	S-1230	2.706	2.126	1.102	1.614	2.559	2.130
2	S-1232	2.981	2.441	1.181	1.732	2.677	2.780

METRIC DEEP HEXAGON

A/F mm	MODEL NO.	D1 mm	D2 mm	T mm	C mm	OAL mm	Wt. Kg.
17	S-12M17L	30.0	42.0	12.0	61.0	85.0	0.463
19	S-12M19L	32.0	42.0	12.0	61.0	85.0	0.479
21	S-12M21L	36.0	42.0	13.0	61.0	85.0	0.542
22	S-12M22L	37.0	42.0	13.0	61.0	85.0	0.551
23	S-12M23L	39.0	42.0	13.0	61.0	85.0	0.586
24	S-12M24L	40.0	42.0	15.0	61.0	85.0	0.595
26	S-12M26L	41.0	42.0	15.0	66.0	90.0	0.618
27	S-12M27L	43.0	43.0	16.0	66.0	90.0	0.674
28	S-12M28L	44.0	44.0	16.0	66.0	90.0	0.699
30	S-12M30L	47.0	44.0	18.0	66.0	90.0	0.769
32	S-12M32L	49.0	44.0	18.0	66.0	90.0	0.798
33	S-12M33L	50.0	44.0	18.0	66.0	90.0	0.812
34	S-12M34L	52.0	44.0	20.0	66.0	90.0	0.869
36	S-12M36L	54.0	54.0	20.0	66.0	90.0	1.034
38	S-12M38L	57.0	54.0	23.0	66.0	90.0	1.125
41	S-12M41L	61.0	54.0	23.0	66.0	90.0	1.229
42	S-12M42L	62.0	54.0	25.0	66.0	90.0	1.241
43	S-12M43L	63.0	54.0	25.0	66.0	90.0	1.255
46	S-12M46L	67.0	54.0	25.0	76.0	100.0	1.563
50	S-12M50L	70.0	54.0	28.0	76.0	100.0	1.573

FRACTIONAL DEEP HEXAGON

A/F inch	MODEL NO.	D1 inch	D2 inch	T inch	C inch	OAL inch	Wt. lbs.
9/16	S-1209L	1.131	1.654	0.472	2.402	3.346	0.970
5/8	S-1210L	1.181	1.654	0.472	2.402	3.346	1.020
11/16	S-12011L	1.211	1.654	0.472	2.402	3.346	1.040
3/4	S-1212L	1.260	1.654	0.472	2.402	3.346	1.050
13/16	S-1213L	1.417	1.654	0.512	2.402	3.346	1.190
7/8	S-1214L	1.535	1.654	0.512	2.402	3.346	1.290
15/16	S-1215L	1.575	1.654	0.591	2.402	3.346	1.310
1	S-1216L	1.614	1.654	0.591	2.598	3.543	1.360
1.1/16	S-1217L	1.693	1.693	0.630	2.598	3.543	1.480
1.1/8	S-1218L	1.850	1.732	0.709	2.598	3.543	1.690
1.3/16	S-1219L	1.880	1.732	0.709	2.598	3.543	1.710
1.1/4	S-1220L	1.929	1.732	0.709	2.598	3.543	1.760
1.5/16	S-1221L	2.047	1.732	0.787	2.598	3.543	1.910
1.3/8	S-1222L	2.126	2.126	0.787	2.598	3.543	2.280
1.7/16	S-1223L	2.156	2.126	0.787	2.598	3.543	2.300
1.1/2	S-1224L	2.244	2.126	0.906	2.598	3.543	2.470
1.9/16	S-1225L	2.402	2.126	0.906	2.598	3.543	2.700
1.5/8	S-1226L	2.441	2.126	0.984	2.598	3.543	2.730
1.11/16	S-1227L	2.480	2.126	0.984	2.598	3.543	2.760
1.3/4	S-1228L	2.638	2.126	0.984	2.992	3.937	3.440
1.13/16	S-1229L	2.456	2.126	1.102	2.992	3.937	3.410
1.7/8	S-1230L	2.456	2.126	1.102	2.992	3.937	3.410
2	S-1232L	2.731	2.441	1.181	2.992	3.937	4.180

3/4"

METRIC BIHEXAGON

A/F mm	MODEL NO.	D1 mm	D2 mm	T mm	C mm	OAL mm	Wt. Kg.
17	12M17DH	32.0	44.0	12.0	20.0	45.0	0.370
19	12M19DH	33.0	44.0	12.0	20.0	45.0	0.370
21	12M21DH	36.0	44.0	13.0	23.0	48.0	0.380
22	12M22DH	37.0	44.0	13.0	23.0	48.0	0.380
23	12M23DH	41.0	44.0	13.0	23.0	48.0	0.390
24	12M24DH	41.0	44.0	16.0	23.0	48.0	0.400
26	12M26DH	41.0	44.0	16.0	23.0	48.0	0.400
27	12M27DH	43.0	44.0	16.0	23.0	48.0	0.400
28	12M28DH	45.0	44.0	18.0	23.0	48.0	0.410
30	12M30DH	47.0	44.0	18.0	27.0	52.0	0.425
32	12M32DH	50.0	44.0	19.0	27.0	52.0	0.460
33	12M33DH	50.0	44.0	19.0	30.0	55.0	0.480
34	12M34DH	52.0	44.0	20.0	30.0	55.0	0.500
36	12M36DH	54.0	44.0	20.0	31.0	56.0	0.575
38	12M38DH	57.0	44.0	20.0	34.0	59.0	0.600
41	12M41DH	61.0	44.0	22.0	34.0	59.0	0.625
42	12M42DH	64.0	44.0	22.0	34.0	59.0	0.625
43	12M43DH	64.0	44.0	22.0	39.0	64.0	0.625
46	12M46DH	67.0	54.0	23.0	39.0	64.0	0.825
50	12M50DH	73.0	54.0	25.0	42.0	67.0	1.300
55	12M55DH	78.0	54.0	28.0	46.0	71.0	1.850
60	12M60DH	84.0	54.0	30.0	50.0	75.0	2.050

FRACTIONAL BIHEXAGON

A/F inch	MODEL NO.	D1 inch	D2 inch	T inch	C inch	OAL inch	Wt. lbs.
9/16	1209DH	1.023	1.732	0.472	0.771	1.771	0.700
5/8	1210DH	1.181	1.732	0.472	0.771	1.771	0.815
11/16	1211DH	1.259	1.732	0.472	0.771	1.771	0.815
3/4	1212DH	1.299	1.732	0.472	0.771	1.771	0.815
13/16	1213DH	1.417	1.732	0.511	0.889	1.889	0.835
7/8	1214DH	1.456	1.732	0.511	0.889	1.889	0.835
15/16	1215DH	1.614	1.732	0.629	0.889	1.889	0.880
1	1216DH	1.614	1.732	0.629	0.889	1.889	0.880
1.1/16	1217DH	1.629	1.732	0.629	0.889	1.889	0.880
1.1/8	1218DH	1.771	1.732	0.708	0.889	1.889	0.900
1.3/16	1219DH	1.850	1.732	0.708	1.047	2.047	0.935
1.1/4	1220DH	1.968	1.732	0.748	1.047	2.047	1.055
1.5/16	1221DH	2.047	1.732	0.748	1.165	2.165	1.100
1.3/8	1222DH	2.125	1.732	0.787	1.165	2.165	1.265
1.7/16	1223DH	2.125	1.732	0.787	1.204	2.204	1.265
1.1/2	1224DH	2.244	1.732	0.787	1.322	2.322	1.320
1.9/16	1225DH	2.401	1.732	0.787	1.322	2.322	1.375
1.5/8	1226DH	2.401	1.732	0.866	1.322	2.322	1.375
1.11/16	1227DH	2.519	1.732	0.866	1.519	2.519	1.375
1.3/4	1228DH	2.519	1.732	0.866	1.519	2.519	1.540
1.13/16	1229DH	2.637	1.732	0.905	1.519	2.519	1.815
1.7/8	1230DH	2.755	2.125	0.905	1.519	2.519	1.815
2	1232DH	2.874	2.125	0.984	1.637	2.637	3.080

METRIC BISQUARE

A/F mm	MODEL NO.	D1 mm	D2 mm	T mm	C mm	OAL mm	Wt. Kg.
32	12M32DS	62.0	44.0	19.0	27.0	52.0	0.510
33	12M33DS	65.0	44.0	19.0	27.0	52.0	0.540
34	12M34DS	65.0	44.0	20.0	30.0	55.0	0.550
36	12M36DS	68.0	44.0	20.0	30.0	55.0	0.610
38	12M38DS	70.0	54.0	20.0	30.0	55.0	0.700
39	12M39DS	73.0	54.0	20.0	30.0	55.0	0.725
40	12M40DS	73.0	54.0	20.0	30.0	55.0	0.725
41	12M41DS	75.0	54.0	22.0	33.0	58.0	0.750
42	12M42DS	78.0	54.0	22.0	33.0	58.0	0.750
43	12M43DS	78.0	54.0	22.0	33.0	58.0	0.750
46	12M46DS	83.0	54.0	23.0	35.0	60.0	0.940

FRACTIONAL BISQUARE

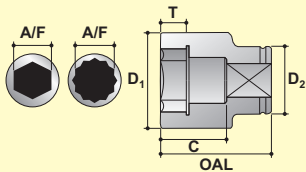
A/F inch	MODEL NO.	D1 inch	D2 inch	T inch	C inch	OAL inch	Wt. lbs.
1.1/4	1220DS	2.440	1.732	0.748	1.047	2.047	1.120
1.5/16	1221DS	2.559	1.732	0.748	1.047	2.047	1.210
1.3/8	1222DS	2.677	1.732	0.787	1.165	2.165	1.340
1.7/16	1223DS	2.755	2.125	0.787	1.165	2.165	1.495
1.1/2	1224DS	2.755	2.125	0.787	1.165	2.165	1.540
1.9/16	1225DS	2.874	2.125	0.787	1.166	2.165	1.595
1.5/8	1226DS	2.952	2.125	0.787	1.283	2.283	1.650
1.11/16	1227DS	3.070	2.125	0.866	1.283	2.283	1.650
1.3/4	1228DS	3.149	2.125	0.866	1.283	2.283	1.760
1.13/16	1229DS	3.267	2.125	0.905	1.362	2.362	2.070
1.7/8	1230DS	3.346	2.125	0.905	1.362	2.362	2.110

METRIC DEEP BISQUARE

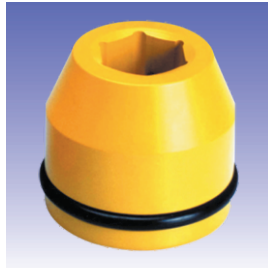
A/F mm	MODEL NO.	D1 mm	D2 mm	T mm	C mm	OAL mm	Wt. Kg.
32	12M32LDS	62.0	44.0	19.0	65.0	90.0	0.910
33	12M33LDS	65.0	44.0	19.0	65.0	90.0	0.940
34	12M34LDS	65.0	44.0	20.0	65.0	90.0	0.950
36	12M36LDS	68.0	44.0	20.0	65.0	90.0	1.010
38	12M38LDS	70.0	54.0	20.0	65.0	90.0	1.100
39	12M39LDS	73.0	54.0	20.0	65.0	90.0	1.125
40	12M40LDS	73.0	54.0	20.0	65.0	90.0	1.125
41	12M41LDS	75.0	54.0	22.0	65.0	90.0	1.150
42	12M42LDS	78.0	54.0	22.0	70.0	95.0	1.150
43	12M43LDS	78.0	54.0	22.0	70.0	95.0	1.150
46	12M46LDS	83.0	54.0	23.0	75.0	100.0	1.340

FRACTIONAL DEEP BISQUARE

A/F inch	MODEL NO.	D1 inch	D2 inch	T inch	C inch	OAL inch	Wt. lbs.
1.1/4	1220LDS	2.440	1.732	0.748	2.543	3.543	2.000
1.5/16	1221LDS	2.559	1.732	0.748	2.543	3.543	2.090
1.3/8	1222LDS	2.677	1.732	0.787	2.543	3.543	2.220
1.7/16	1223LDS	2.755	2.125	0.787	2.543	3.543	2.375
1.1/2	1224LDS	2.755	2.125	0.787	2.543	3.543	2.420
1.9/16	1225LDS	2.874	2.125	0.787	2.543	3.543	2.475
1.5/8	1226LDS	2.952	2.125	0.787	2.543	3.543	2.530
1.11/16	1227LDS	3.070	2.125	0.866	2.740	3.740	2.530
1.3/4	1228LDS	3.149	2.125	0.866	2.740	3.740	2.685
1.13/16	1229LDS	3.267	2.125	0.905	2.937	3.937	2.950
1.7/8	1230LDS	3.346	2.125	0.905	2.937	3.937	3.050



A/F Nominal size across flats
 D1 Max. outside dia. socket end
 D2 Max. outside dia. sq. drive end
 OAL Nominal overall length
 T Min. depth of socket form
 C Bolt clearance depth



METRIC HEXAGON

A/F mm	MODEL NO.	D1 mm	D2 mm	T mm	C mm	OAL mm	Wt. Kg.
17	S-12M17T	27.9	42.0	12.0	21.0	45.0	0.292
19	S-12M19T	30.4	42.0	12.0	21.0	45.0	0.296
21	S-12M21T	32.9	42.0	13.0	24.0	48.0	0.312
22	S-12M22T	34.3	42.0	13.0	24.0	48.0	0.317
23	S-12M23T	35.3	42.0	13.0	24.0	48.0	0.318
24	S-12M24T	36.8	42.0	15.0	24.0	48.0	0.322
26	S-12M26T	38.5	42.0	15.0	24.0	48.0	0.320
27	S-12M27T	40.5	42.0	16.0	24.0	48.0	0.329
28	S-12M28T	42.0	42.0	16.0	24.0	48.0	0.334
30	S-12M30T	44.4	44.0	18.0	27.0	51.0	0.391
32	S-12M32T	46.8	44.0	18.0	27.0	51.0	0.410
33	S-12M33T	48.0	44.0	18.0	27.0	51.0	0.416
34	S-12M34T	49.3	44.0	20.0	30.0	54.0	0.449
36	S-12M36T	51.9	44.0	20.0	30.0	54.0	0.477
38	S-12M38T	54.4	54.0	23.0	35.0	59.0	0.684
41	S-12M41T	58.4	54.0	23.0	35.0	59.0	0.736
42	S-12M42T	59.4	54.0	25.0	35.0	59.0	0.737
43	S-12M43T	60.4	54.0	25.0	38.0	62.0	0.778
46	S-12M46T	64.0	54.0	25.0	38.0	62.0	0.833

FRACTIONAL HEXAGON

A/F inch	MODEL NO.	D1 inch	D2 inch	T inch	C inch	OAL inch	Wt. lbs.
11/16	S-1211T	1.078	1.654	0.472	0.827	1.772	0.640
3/4	S-1212T	1.197	1.654	0.472	0.827	1.772	0.650
13/16	S-1213T	1.295	1.654	0.512	0.945	1.890	0.690
7/8	S-1214T	1.390	1.654	0.512	0.945	1.890	0.700
15/16	S-1215T	1.449	1.654	0.591	0.945	1.890	0.710
1	S-1216T	1.516	1.654	0.591	0.945	1.890	0.710
1.1/16	S-1217T	1.594	1.654	0.630	0.945	1.890	0.720
1.1/8	S-1218T	1.748	1.732	0.709	1.063	2.008	0.860
1.3/16	S-1219T	1.778	1.732	0.709	1.063	2.008	0.880
1.1/4	S-1220T	1.843	1.732	0.709	1.063	2.008	0.900
1.5/16	S-1221T	1.941	1.732	0.787	1.181	2.126	0.990
1.3/8	S-1222T	2.043	1.732	0.787	1.181	2.126	1.050
1.7/16	S-1223T	2.073	1.732	0.787	1.181	2.126	1.080
1.1/2	S-1224T	2.142	2.126	0.906	1.378	2.323	1.500
1.9/16	S-1225T	2.299	2.126	0.906	1.378	2.323	1.620
1.5/8	S-1226T	2.378	2.126	0.984	1.496	2.441	1.710
1.11/16	S-1227T	2.378	2.126	0.984	1.496	2.441	1.710
1.3/4	S-1228T	2.500	2.126	0.984	1.496	2.441	1.810
1.13/16	S-1229T	2.530	2.126	0.984	1.496	2.441	1.840

METRIC DEEP HEXAGON

A/F mm	MODEL NO.	D1 mm	D2 mm	T mm	C mm	OAL mm	Wt. Kg.
17	S-12M17LT	27.9	42.0	12.0	61.0	85.0	0.421
19	S-12M19LT	30.4	42.0	12.0	61.0	85.0	0.445
21	S-12M21LT	32.9	42.0	13.0	61.0	85.0	0.470
22	S-12M22LT	34.3	42.0	13.0	61.0	85.0	0.486
23	S-12M23LT	35.3	42.0	13.0	61.0	85.0	0.494
24	S-12M24LT	36.8	42.0	15.0	61.0	85.0	0.512
26	S-12M26LT	38.5	42.0	15.0	66.0	90.0	0.545
27	S-12M27LT	40.5	42.0	16.0	66.0	90.0	0.643
28	S-12M28LT	42.0	42.0	16.0	66.0	90.0	0.621
30	S-12M30LT	44.4	44.0	18.0	66.0	90.0	0.682
32	S-12M32LT	46.8	44.0	18.0	66.0	90.0	0.726
33	S-12M33LT	48.0	44.0	18.0	66.0	90.0	0.744
34	S-12M34LT	49.3	44.0	20.0	66.0	90.0	0.767
36	S-12M36LT	51.9	44.0	20.0	66.0	90.0	0.822
38	S-12M38LT	54.4	54.0	23.0	66.0	90.0	1.020
41	S-12M41LT	58.4	54.0	23.0	66.0	90.0	1.103
42	S-12M42LT	59.4	54.0	25.0	66.0	90.0	1.092
43	S-12M43LT	60.4	54.0	25.0	66.0	90.0	1.095
46	S-12M46LT	64.0	54.0	25.0	66.0	90.0	1.169

FRACTIONAL DEEP HEXAGON

A/F inch	MODEL NO.	D1 inch	D2 inch	T inch	C inch	OAL inch	Wt. lbs.
11/16	S-1211LT	1.128	1.654	0.472	2.402	3.346	0.950
3/4	S-1212LT	1.197	1.654	0.472	2.402	3.346	0.980
13/16	S-1213LT	1.295	1.654	0.512	2.402	3.346	1.030
7/8	S-1214LT	1.390	1.654	0.512	2.402	3.346	1.090
15/16	S-1215LT	1.449	1.654	0.591	2.402	3.346	1.130
1	S-1216LT	1.516	1.654	0.591	2.598	3.543	1.200
1.1/16	S-1217LT	1.594	1.654	0.630	2.598	3.543	1.410
1.1/8	S-1218LT	1.748	1.732	0.709	2.598	3.543	1.500
1.3/16	S-1219LT	1.778	1.732	0.709	2.598	3.543	1.530
1.1/4	S-1220LT	1.843	1.732	0.709	2.598	3.543	1.600
1.5/16	S-1221LT	1.941	1.732	0.787	2.598	3.543	1.690
1.3/8	S-1222LT	2.043	1.732	0.787	2.598	3.543	1.810
1.7/16	S-1223LT	2.073	1.732	0.787	2.598	3.543	1.830
1.1/2	S-1224LT	2.142	2.126	0.906	2.598	3.543	2.240
1.9/16	S-1225LT	2.299	2.126	0.906	2.598	3.543	2.430
1.5/8	S-1226LT	2.378	2.126	0.984	2.598	3.543	2.410
1.11/16	S-1227LT	2.378	2.126	0.984	2.598	3.543	2.410
1.3/4	S-1228LT	2.520	2.126	0.984	2.598	3.543	2.570
1.13/16	S-1229LT	2.550	2.126	0.984	2.598	3.543	2.600

3/4"



METRIC HEX DRIVER SOCKETS

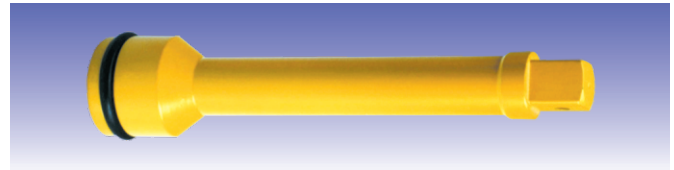
HEX A/F mm	MODEL NO.	BIT LENGTH	OAL mm	Wt Kg.
8	12M08H	12.0	62.0	0.240
10	12M10H	18.0	65.0	0.250
12	12M12H	25.0	75.0	0.300
14	12M14H	25.0	75.0	0.300
17	12M17H	35.0	88.0	0.450
19	12M19H	35.0	88.0	0.450
22	12M22H	40.0	93.0	0.500
24	12M24H	45.0	93.0	0.550
27	12M27H	45.0	100.0	0.700

FRACTIONAL HEX DRIVE SOCKETS

HEX A/F inch	MODEL NO.	BIT LENGTH	OAL inch	Wt lbs.
3/8	1206H	0.708	2.559	0.550
7/16	1207H	0.708	2.559	0.550
1/2	1208H	0.984	2.952	0.660
9/16	1209H	0.984	2.952	0.660
5/8	1210H	1.377	3.464	0.715
3/4	1212H	1.377	3.464	0.990
13/16	1213H	1.574	3.661	1.100
7/8	1214H	1.574	3.661	1.210
1	1216H	1.771	3.937	1.210

REGULAR EXTENSIONS

OAL mm (inch)	MODEL NO.	SHANK DIA mm (inch)	HEAD DIA mm (inch)	Wt Kg. (lbs.)
75 (3")	E1203	25.0 (0.984)	44.0 (1.732)	0.60 (1.32)
125 (5")	E1205			0.80 (1.76)
175 (7")	E1207			1.00 (2.20)
250 (10")	E1210	25.0 (0.984)	44.0 (1.732)	1.20 (2.64)
330 (13")	E1213			1.50 (3.30)



SQUARE ADAPTORS

SIZE	MODEL NO.	HEAD DIA mm (inch)	OAL mm (inch)	Wt Kg. (lbs.)
3/4" F X 1/2" M	A1208	44.0 (1.732)	56.0 (2.204)	0.33 (0.72)
3/4" F X 1" M	A1216		65.0 (2.559)	0.45 (0.99)



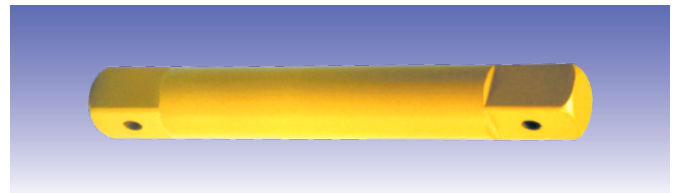
UNIVERSAL JOINT

SQUARE DRIVE	MODEL NO.	DIA mm (inch)	OAL mm (inch)	Wt Kg. (lbs.)
3/4"	U1212	44.0 (1.732)	94.0 (3.700)	0.60 (1.32)



DOUBLE MALE EXTENSIONS

OAL mm (inch)	MODEL NO.	SHANK DIA mm (inch)	HEAD DIA mm (inch)	Wt Kg. (lbs.)
75 (3")	S1203	25.0 (0.984)	19.0 (0.750)	0.40 (0.88)
125 (5")	S1205			0.55 (1.21)
175 (7")	S1207			0.75 (1.65)
250 (10")	S1210	25.0 (0.984)	19.0 (0.750)	0.95 (2.09)
330 (13")	S1213			1.05 (2.31)
410 (16")	S1216			1.60 (3.50)



DOUBLE FEMALE ADAPTORS

SIZE	MODEL NO.	HEAD DIA mm (inch)	OAL mm (inch)	Wt Kg. (lbs.)
3/4" F X 1/2" F	AN1208	44.0 (1.732)	55.0 (2.165)	0.45 (0.99)
3/4" F X 1" F	AN1212		63.0 (2.480)	0.57 (1.25)

