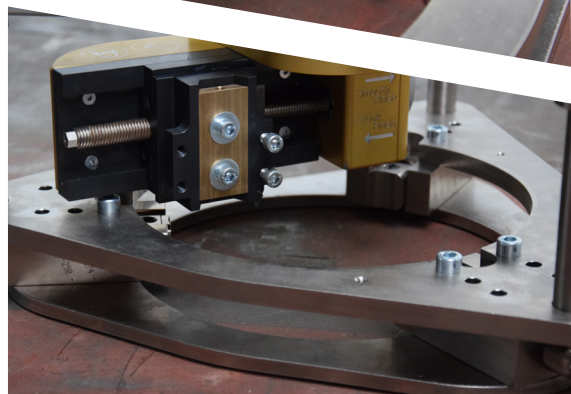


Technical Data

MiniFacer OD

The Sygma MiniFacer OD is our latest development within our manual flange facers range. It is the first manual flange facer with an outside diameter clamping system. It is the first manual flange facer with an outside diameter clamping system. Its unique and robust design makes it possible to quickly and easily machine different flange types in a wide range of industries.



Operational Data

	Min	Max
External Clamp Capacity	Ø 65mm Ø 2,5"	Ø 350mm Ø 13,5"
Facing Diameter	Ø 0mm Ø 0"	Ø 350mm Ø 13,5"

Dimentional Data

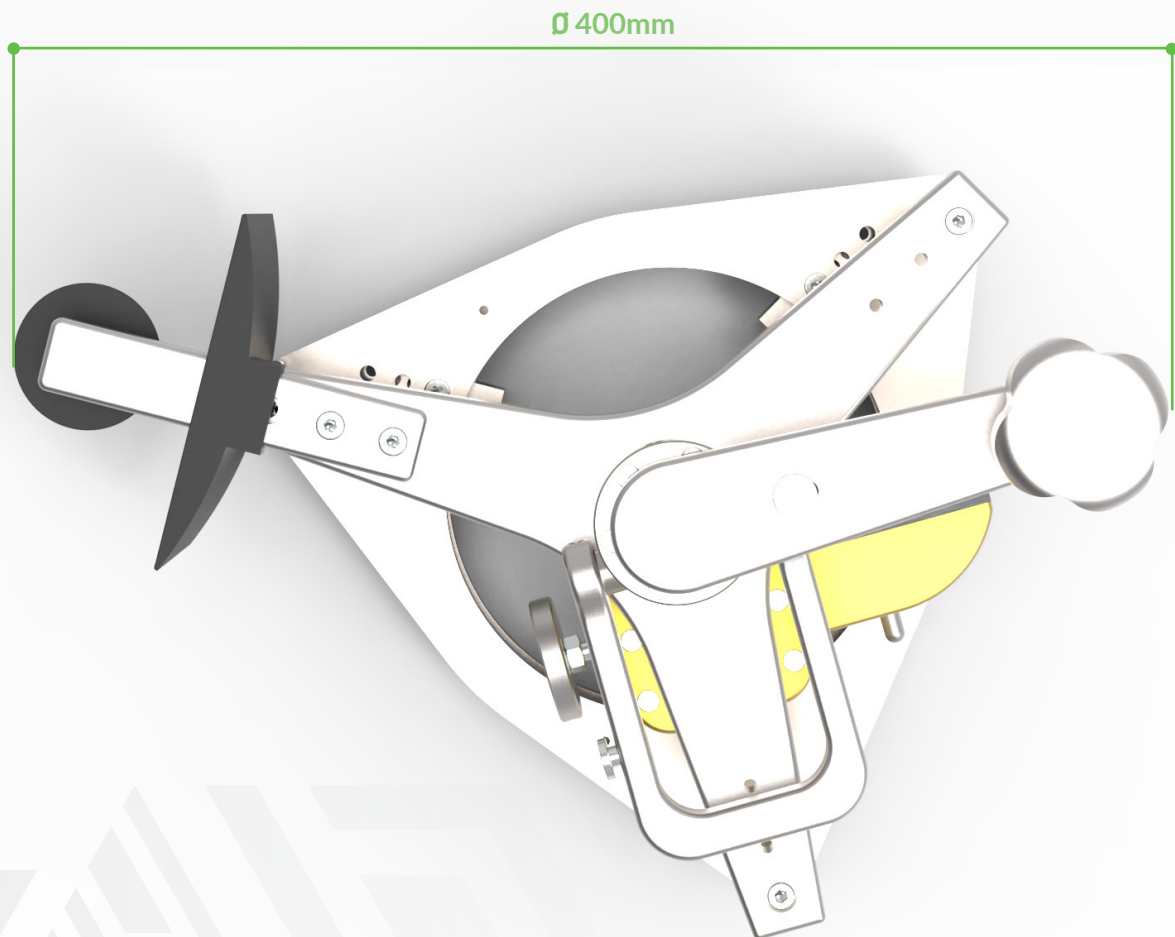
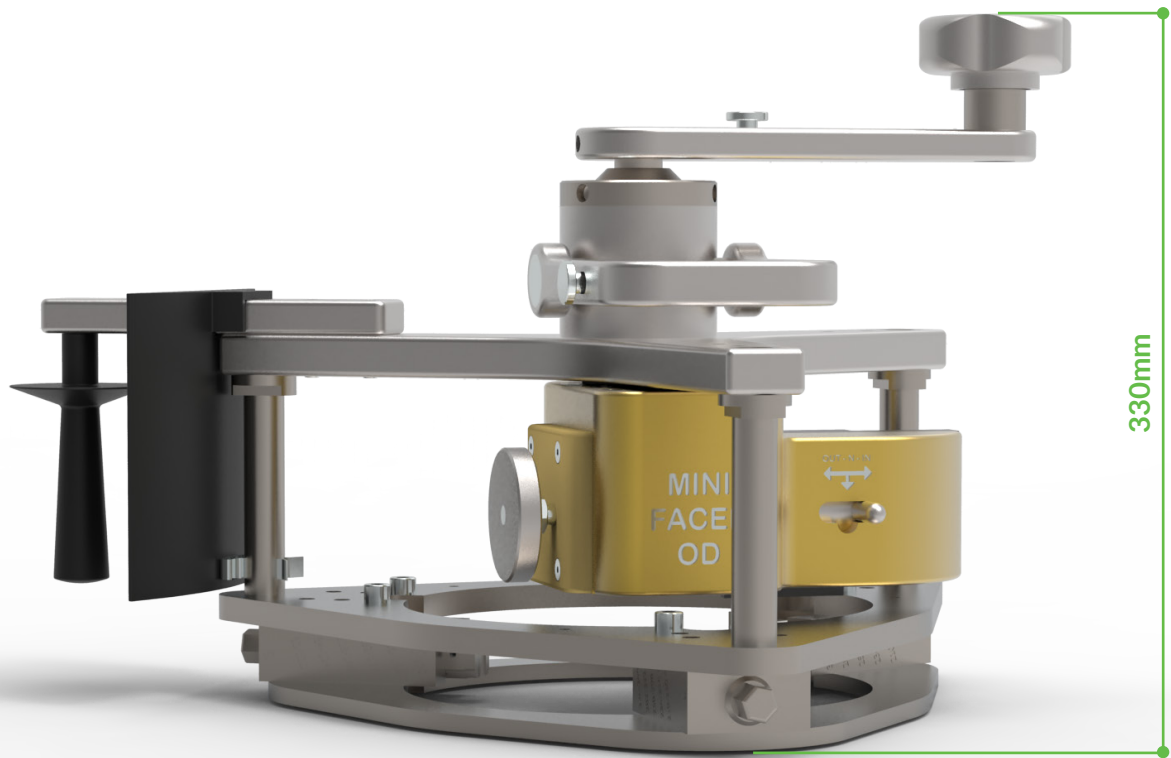
Case Dimensions	67 x 52 x 39 cm
Total Case Weight	40kg
MiniFacer Weight (ready to use)	10kg
Overall Length Machine	240mm / 9,5"
Height from Flange Face	300mm / 12"
Min. Swing Diameter	Ø 300mm / 12"

Completed With:

- Toolkit
- Case
- Screws
- Mounting Clamps
- CE Certificate
- Manual



Dimentional Data



Case Content



1. MiniFacer OD
2. Clamping Ring Small
3. Clamping Ring Large
4. Bar for Safety Handle
5. Clamping Feet
6. Handle for Turning MiniFacer OD
7. Safety Cap
8. Box With Hand Tools
9. Dial Gauge
10. Safety Handle

Plastic box with hand tools



1. Cutting tip holders N + 90° LH
2. Bolts for mounting clamping ring
3. Allen Key with T grip 5mm
4. Socket for square drive 15mm
5. Allen bit for square drive 6mm
6. Square drive with handle